

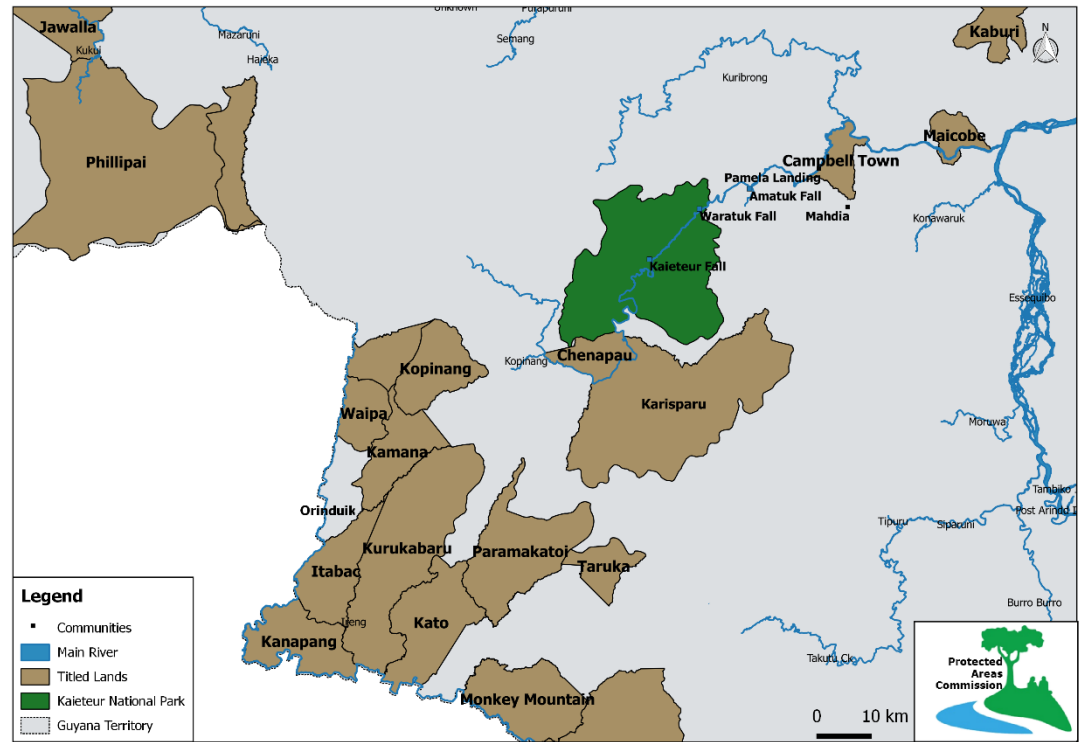
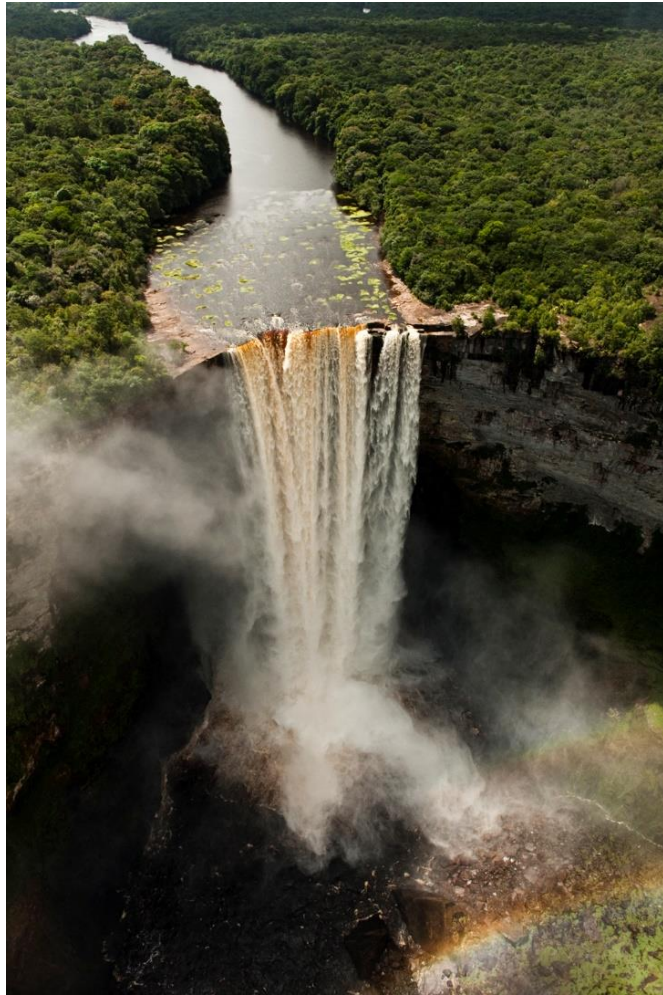




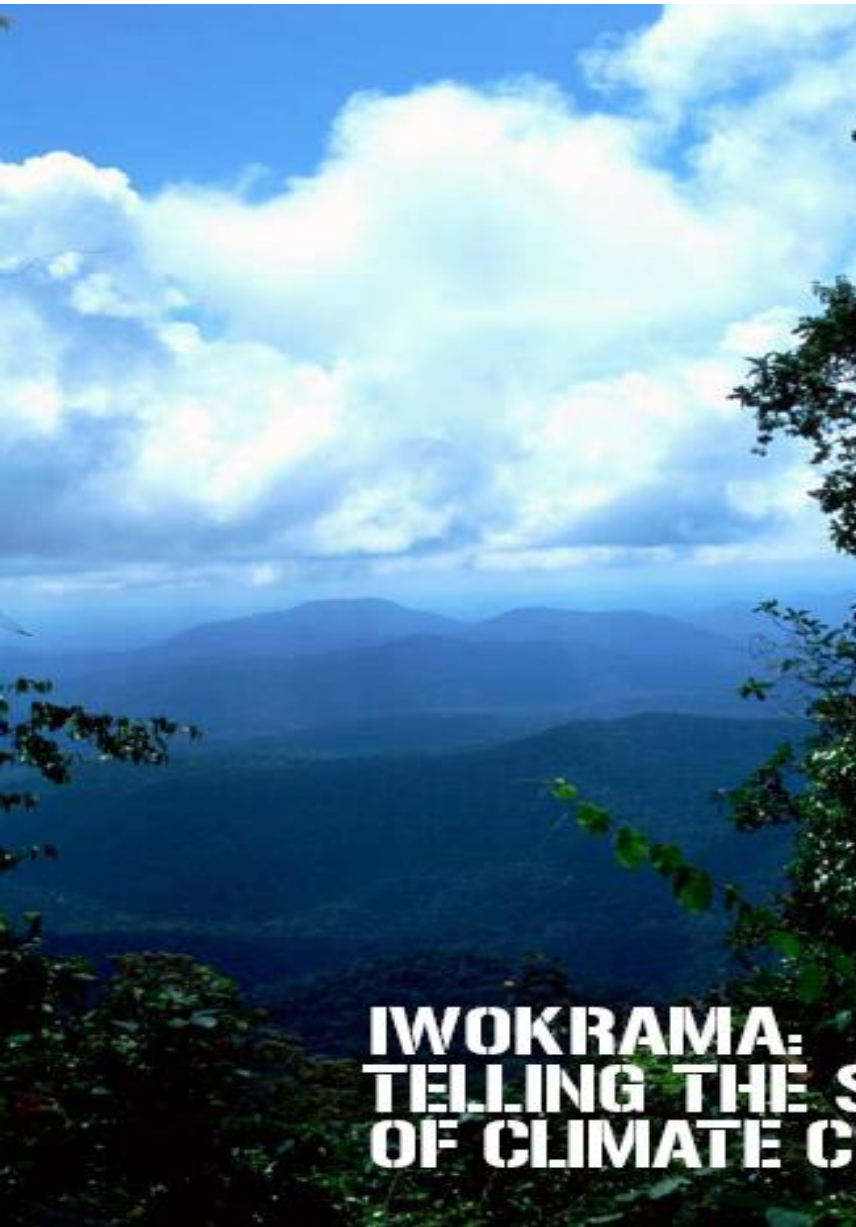
Transmission of Living Cultural Heritage in Protected Areas Management - Guyana



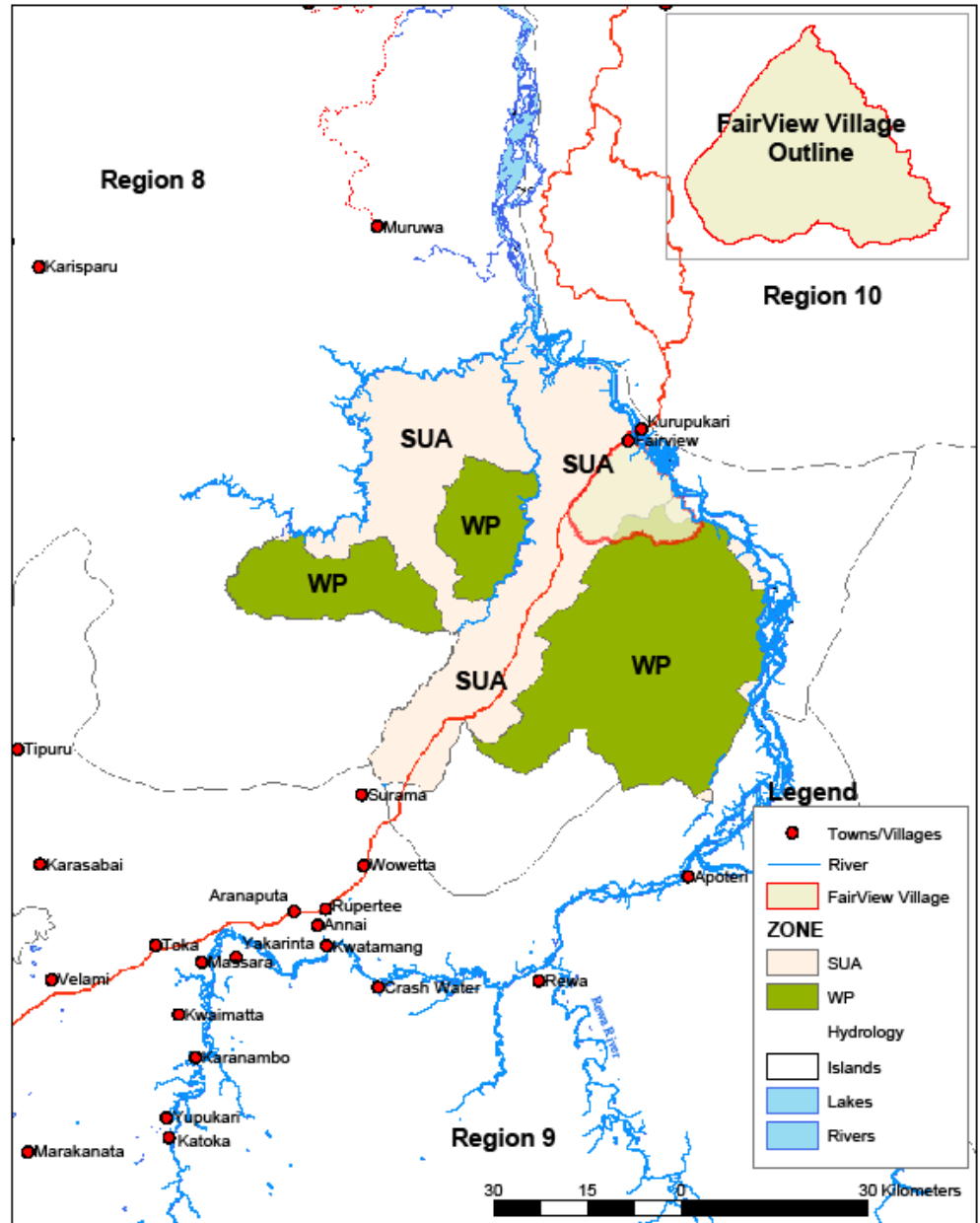
Kaieteur National Park - 1929



Iwokrama



IWOKRAMA FOREST And NEIGHBOURING COMMUNITIES

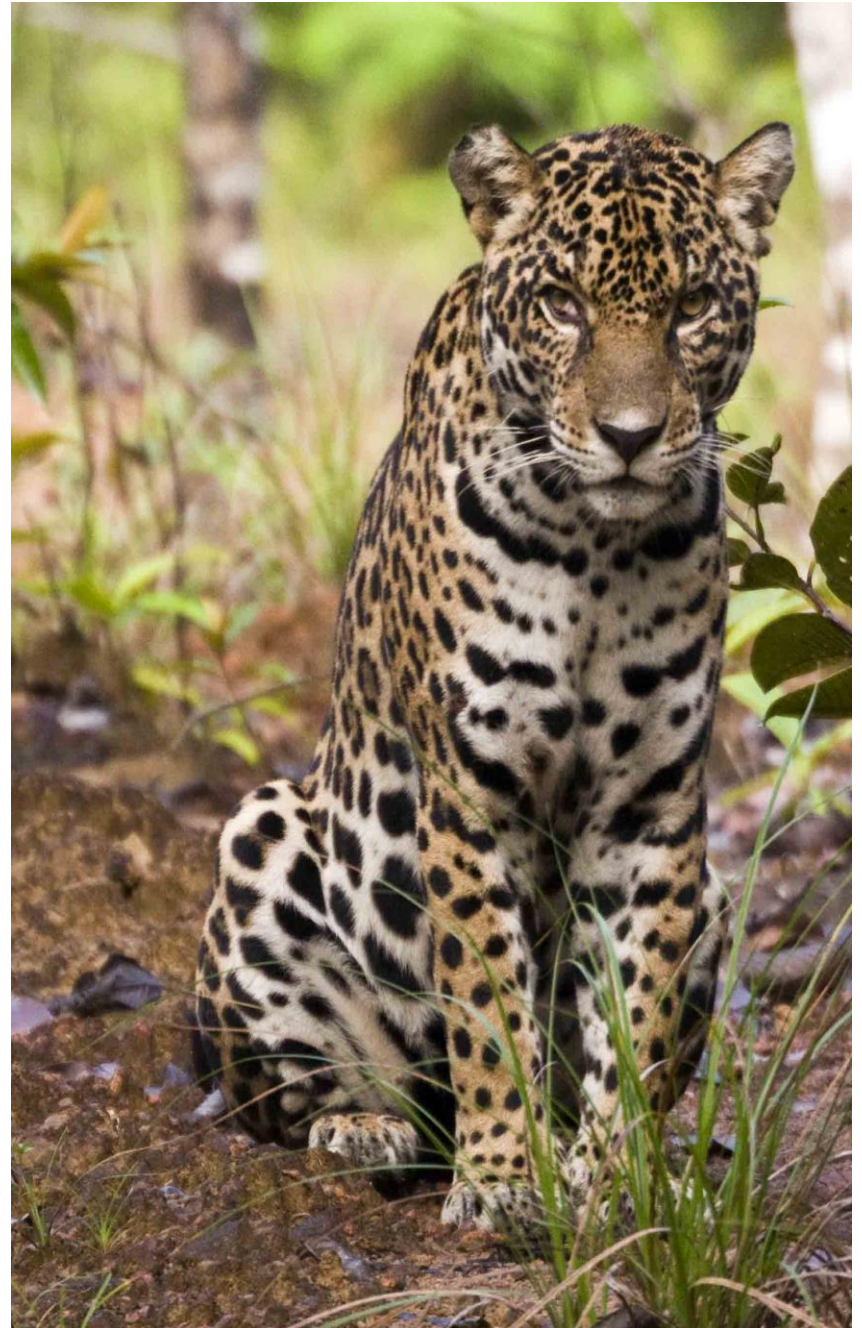




PROTECTED AREAS ACT 2011

Establishes:

- **National Protected Areas System;**
- **Protected Areas Commission (PAC);**
- **Board of Directors to oversee the PAC;**
- **National Protected Areas Trust; and**
- **Board of Trustees to oversee the Trust**



PAC Mandate

Establish

Manage

Maintain

Promote

Expand



Objectives of Protected Areas Act

To provide for;

- Protection and conservation of Guyana's natural heritage and natural capital
- Creation, management and financing of a national system of protected areas
- Maintenance of ecosystem services of national and global importance including **climate change regulation**
- Public participation in protected areas and conservation

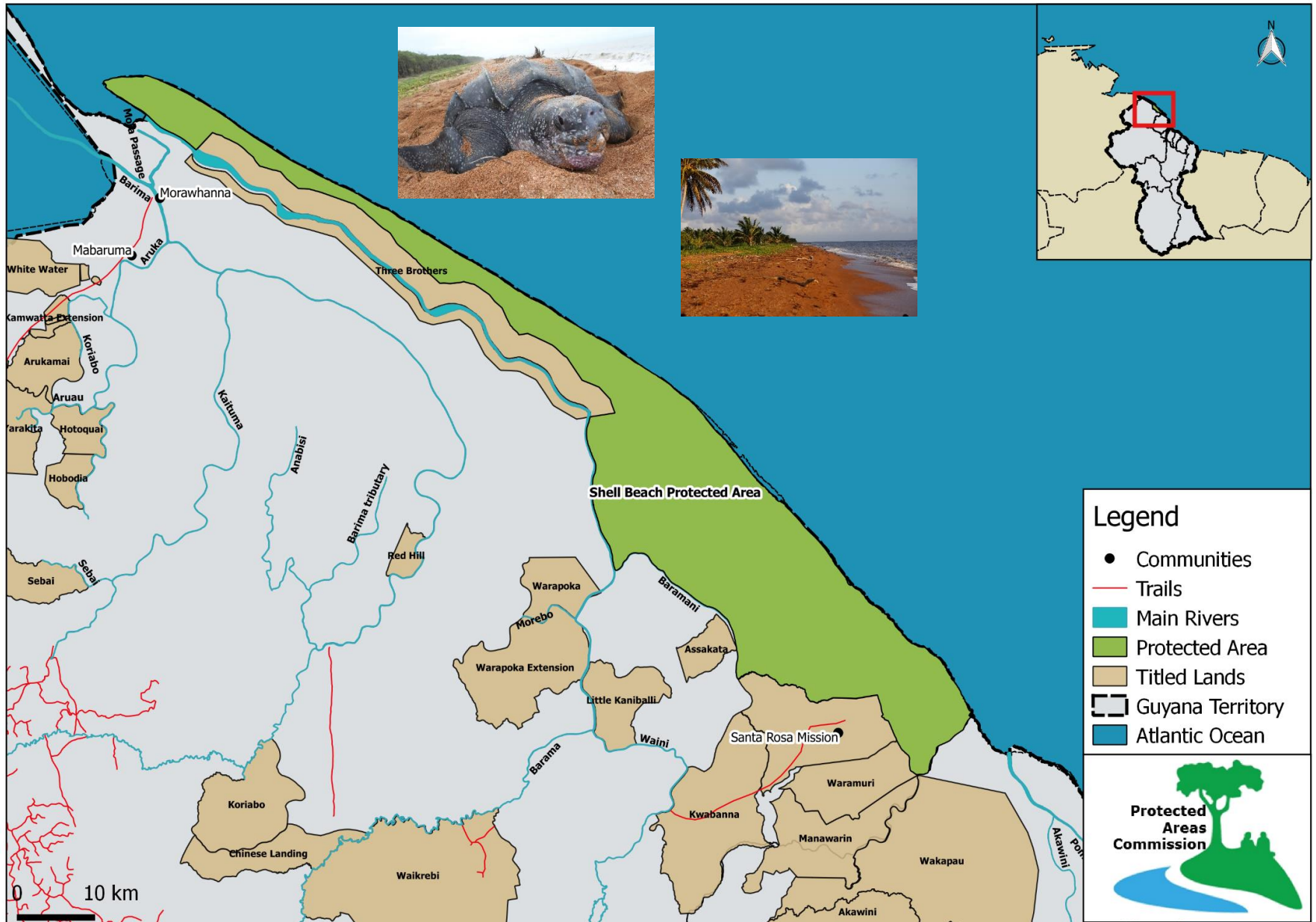




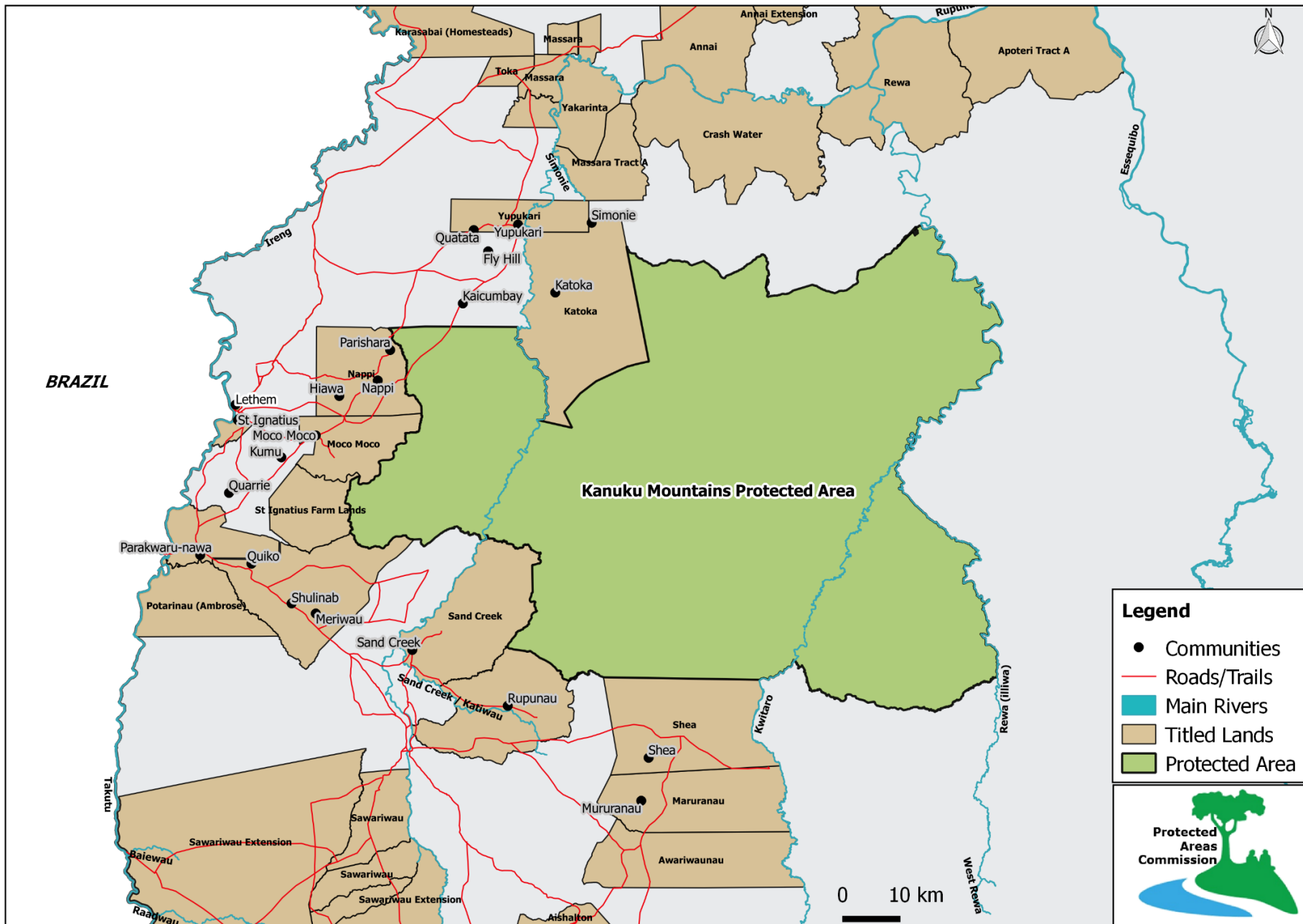
National Protected Areas System



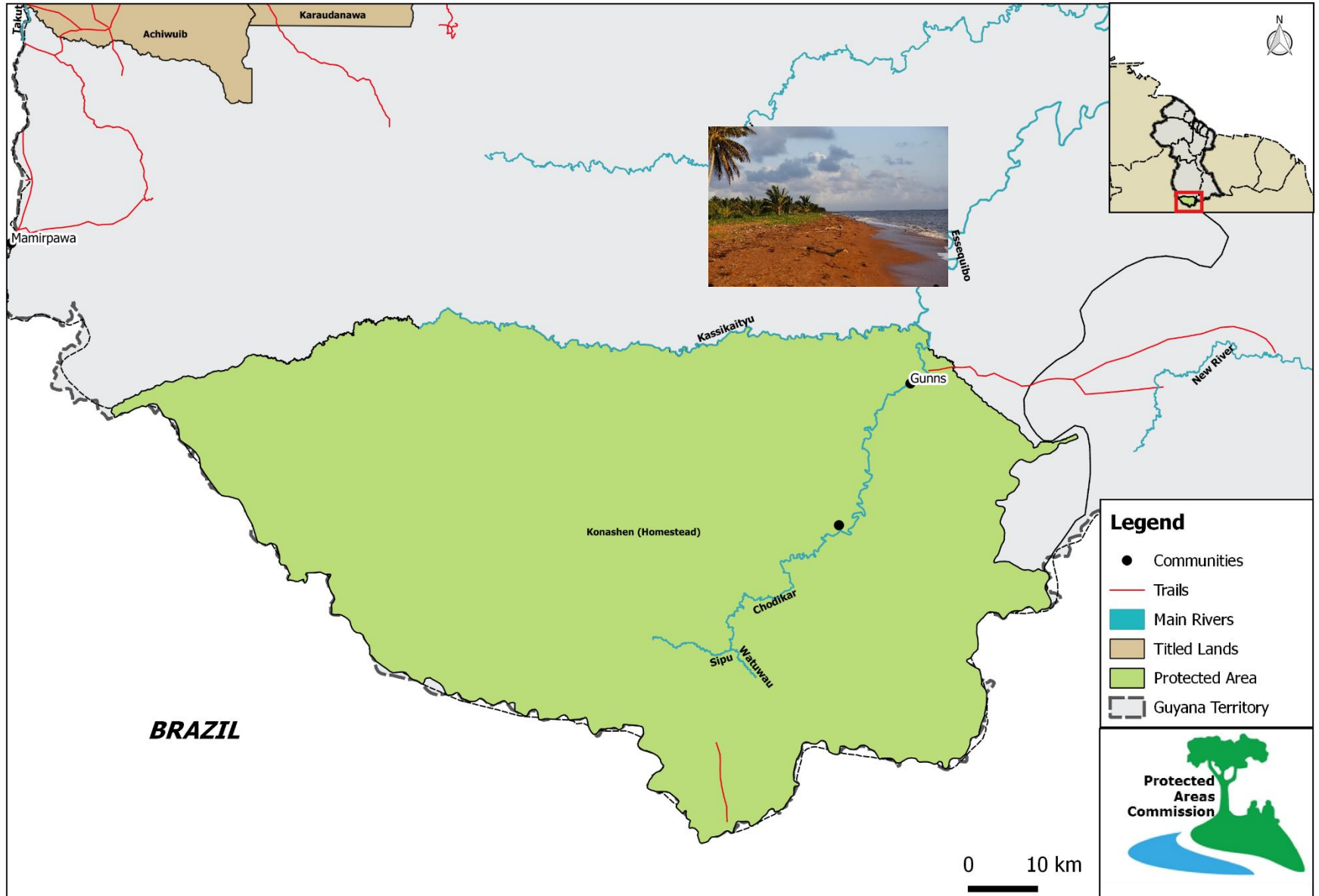
Shell Beach Protected Area



Kanuku Mountains Protected Areas



Kanashen Amerindian Protected Area



Kaieteur National Park



Management Plan
2016-2020
PROTECTED AREAS COMMISSION

Kanuku Mountains Protected Area



Management Plan
KMPA
Management Plan

Foster increased benefit sharing
Improve local stakeholder support and engagement

Support strong internal financial systems

Increase national and international appreciation for Guyana's PAs

Increase funds for PA management

Improve public education and awareness of PAs

Recruit staff and build capacity

Develop monitoring and administrative systems

Improve planning

Strengthen policy framework

Facilitate priority research

Benefits & Partnerships

Finance

Awareness & Outreach

Admin & Management



Protected Areas Commission

Strategic Plan 2015 – 2019

Protecting nature and improving lives

We strive to effectively manage our Protected Areas, while ensuring that they continue to add value to the lives of present and future generations



Guided by our core values of Integrity, Transparency, Commitment, Inclusiveness, Innovation, and a focus on Results

Successes

- ❖ Legislation + Management Plans
- ❖ Strategic level Planning
- ❖ Employment + Ranger Training
- ❖ Resource Use Mapping
- ❖ Supporting Community events
- ❖ Consultation Protocols

Protecting Nature and Improving Lives

It's in



Nature



PROTECTED
AREAS
COMMISSION

Successes

- ❖ Education and Awareness Materials
- ❖ Supporting livelihoods (Craft) and local research.
- ❖ Drawing from the experiences of others

Protecting Nature and Improving Lives

It's in



Nature



PROTECTED
AREAS
COMMISSION



BAOKOPA'O WA DI'ITINPAN WADAUNIINAO ATI'O NII

Kaimanamana'o, wa zaamatapan, wa di'itapan na'apamnii wa sha'apatan Wapichan wiizi Guyana'ao raza

THINKING TOGETHER FOR THOSE COMING BEHIND US

An outline plan for the care of Wapichan territory in Guyana

BAOKOPA'O WA DI'ITINPAN WADAUNIINAO ATI'O NII

*Kaimanamana'o, wa zaamatapan, wa di'itapan
na'apamnii wa sha'apatan
Wapichan wiizi Guyana'ao raza*

THINKING TOGETHER FOR THOSE COMING BEHIND US

*An outline plan for the care of
Wapichan territory in Guyana*

*A document of the
Indigenous peoples of the South Rupununt*



Challenges, Threats, Opportunities



ODACY DAVIS
DEPUTY COMMISSIONER - PAC

